

**atmosfera**   
The unexpected feel



**atmosfera**   
The unexpected feel

A brand of **TERRATINTA**  
group

---

WHAT

---

WHO

---

WHERE

---

Atmosfera is an original project that celebrates our passion for ceramics through the foundation of new proposals for the world of furniture and accessories.

Material becomes a vehicle of emotions, creating unique scenarios that are both evocative and real. Surfaces can give a specific character to spaces, creating always different atmospheres.

*Atmosfera è un progetto originale che celebra la nostra passione per la ceramica attraverso la formulazione di nuove proposte per il mondo dell'arredo e del complemento.*

*La materia diventa veicolo di emozioni, creatrice di scenari unici al contempo evocativi e concreti. Le superfici possono infondere infatti un carattere specifico agli spazi, creando atmosfere sempre diverse.*

---

The multiplicity, the multidisciplinary, the inclusion of different figures working in synergy is already the major strength of Terratinta Group. Today this same strength is found in Atmosfere, which becomes the spokesperson of styles, tastes and tales that lead from the local to the international.

*La diversità, la multidisciplinarietà, l'inclusione di figure differenti che lavorano in sinergia è già la forza di Terratinta Group, ed oggi anche di Atmosfere, che si fa portavoce di stili, gusti e racconti che dal locale portano all'internazionale.*

---

Born in the heart of Italian ceramic district but inspired by Nordic style, the proposals of Atmosfere will adapt to the most diverse styles, thanks to the care of the consolidated level of quality of Made in Italy and the typical taste of Terratinta Group.

*Nate nei luoghi della ceramica italiana ma ispirate allo stile nordico, le proposte di Atmosfere saranno in grado di adattarsi agli stili più diversi, grazie al mantenimento dell'ormai consolidato livello di qualità del Made in Italy e del gusto tipico di Terratinta Group.*

---

WITH



We warmly thank Architect Francesco Lucchese for his commitment and proactive attitude that helped us bring together realities with experience in their proper sectors and creating a new world of excellence for Terratinta Group.

*Ringraziamo vivamente l'architetto Francesco Lucchese per l'impegno e la positività con cui ha supportato l'unione di realtà di esperienza nei rispettivi settori per creare un nuovo mondo di eccellenza per Terratinta Group.*

Francesco Lucchese was born in Messina in 1960 and graduated in Architecture at Politecnico di Milano in 1985.

His professional career started with the achievement of the first ADI prize for a foldable chair. In 1986, he founded Lucchesedesign Studio, a multidisciplinary organization which, besides working on architecture and product design projects, also coordinates branding, communication, strategic and exhibitions projects for several companies. The products, designed for both Italian and international companies belonging to different market segments (furniture, lighting, bathroom, surfaces, accessories, etc.) are often awarded with important prizes. The architecture activities are carried out mostly in foreign Countries (China, Brazil, Bulgaria, Belgium, etc.) and are represented by big projects such as hotels, public spaces, showrooms and exclusive private residences. The opening of a Chinese headquarter in Nanjing makes the Studio competitive on the Asian market thanks to the direct presence on the territory, while a solid partnership with a professional in Dubai opens up new horizons in the Middle East. In 2020 he won the Compasso d'oro with the innovative hood Spazio for Falmec and an Honorable Mention at the ADI 2020 Award for LifeSteel®, the eco mixer for Fir Italia. Besides carrying out these professional activities, Francesco Lucchese is a Professor of the Design Faculty at Politecnico di Milano.

*Francesco Lucchese nasce a Messina nel 1960 e consegue la laurea in Architettura presso il Politecnico di Milano nel 1985. Inizia la sua carriera ricevendo il primo premio ADI per un progetto di sedia pieghevole. Nel 1986 fonda lo studio Lucchesedesign, realtà multidisciplinare che affianca al design di prodotto e all'architettura il coordinamento di progetti di posizionamento aziendale, eventi e strategie di comunicazione. I prodotti, disegnati per aziende italiane e internazionali di diversi settori (arredo, luce, arredobagno, superfici, complementi, ecc.) ricevono prestigiosi riconoscimenti. L'attività di architettura è rappresentata da progetti rilevanti come hotels, spazi pubblici, showroom ed esclusive residenze private, soprattutto all'estero (Cina, Brasile, Bulgaria, Belgio, ecc.).*

*L'apertura di una sede a Nanjing (Cina) rende lo Studio competitivo sul mercato asiatico, in quanto garantisce una presenza diretta sul territorio, mentre una partnership consolidata a Dubai apre nuove prospettive di progetto nell'area del Medio Oriente. Nel 2020 si aggiudica il Compasso d'oro con l'innovativa cappa Spazio per Falmec e una Menzione d'Onore al Premio ADI 2020 per LifeSteel®, il miscelatore eco per Fir Italia. Parallelamente alle attività di progetto, Francesco Lucchese porta avanti l'attività di docenza al Politecnico di Milano presso la Facoltà di Design.*





TOP12MM



**01**  
MARMO  
APUANO



**02**  
VICENTINA  
CENERE



**03**  
BETON  
IVORY



**04**  
BETON  
GREY



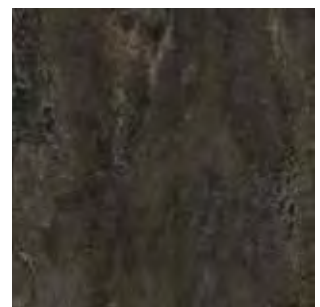
**05**  
SOLID  
WHITE



**06**  
MARMO  
CALACATTA



**07**  
BETONMETAL  
COPPER EVO



**08**  
BETONMETAL  
BLACK STEEL EVO



# 01 MARMO APUANO TOP12MM

SIZE CHART | *TABELLA FORMATI*

---



160x320 satin



Book match A

Book match B



# 02 VICENTINA CENERE TOP12MM

SIZE CHART | *TABELLA FORMATI*

---



160x320 matt

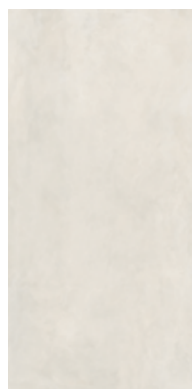




# 03 BETON IVORY TOP12MM

SIZE CHART | *TABELLA FORMATI*

---



160x320 matt







# 04 BETON GREY TOP12MM

SIZE CHART | *TABELLA FORMATI*

---



160x320 matt





**05**  
**SOLID WHITE**  
**TOP12MM**

SIZE CHART | *TABELLA FORMATI*

---



160x320 satin





# 06 MARMO CALACATTA TOP12MM

SIZE CHART | *TABELLA FORMATI*

---



160x320 satin



# 07 BETONMETAL COPPER EVO TOP12MM

SIZE CHART | *TABELLA FORMATI*

---



160x320 matt

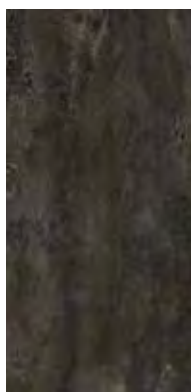




# 08 BETONMETAL BLACK STEEL EVO TOP12MM

SIZE CHART | *TABELLA FORMATI*

---



160x320 matt





**DE  
ARC  
HIT  
ECT  
URA**





## **DE ARCHITECTURA**

A collection of tables inspired by the materials and harmonic proportions of Italian architecture.

*Collezione di tavoli ispirati ai materiali e ai rapporti armonici propri delle architetture italiane.*

*Design by Lucchesedesign Studio*



FLOOR | PAVIMENTO Marmo Apuano 60x120 honed  
KITCHEN TOP | TOP CUCINA Top12mm Marmo Apuano satin  
COUNTER | BANCO Top12mm Vicentina Cenere matt  
TABLE | TAVOLO ALBERTI 01 260x120 / Top12mm Marmo Apuano satin - Noce Canaletto







FLOOR | PAVIMENTO Marmo Apuano 60x120 honed  
KITCHEN TOP | TOP CUCINA Top12mm Marmo Apuano satin  
KITCHEN CABINETS | PENSILI CUCINA Top12mm Vicentina Cenere matt  
TABLE | TAVOLO ALBERTI 01 260x120 / Top12mm Marmo Apuano satin - Noce Canaletto



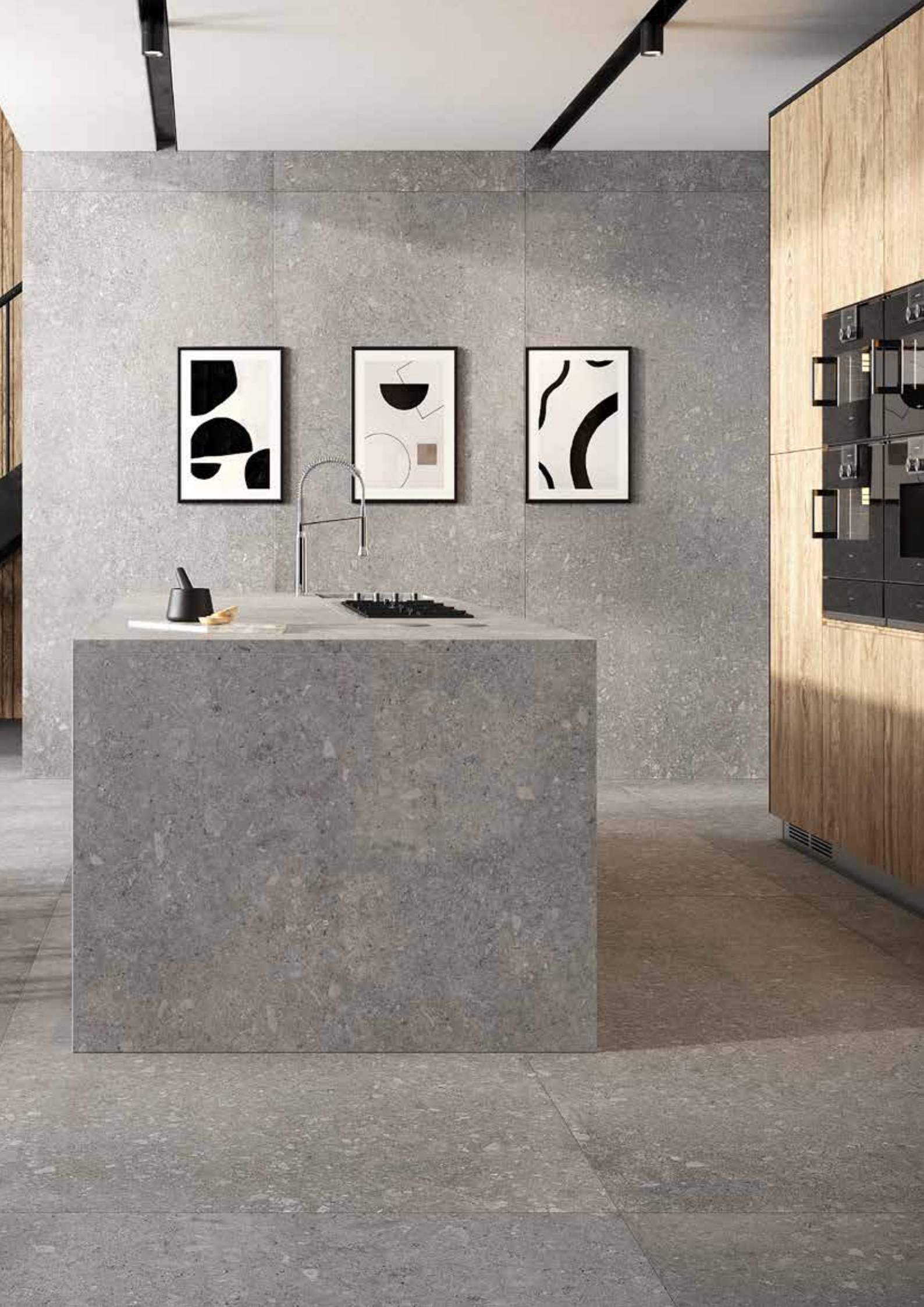


WALL & FLOOR | RIVESTIMENTO & PAVIMENTO Light6mm Vicentina Cenere 120x280 matt  
KITCHEN TOP | TOP CUCINA Top12mm Vicentina Cenere 160x320 matt  
TABLE | TAVOLO VASARI 01 / 260x120 / Top12mm Vicentina Cenere matt - Rovere Chiaro





WALL & FLOOR | RIVESTIMENTO & PAVIMENTO Light6mm Vicentina Cenere 120x280 matt  
KITCHEN TOP | TOP CUCINA Top12mm Vicentina Cenere matt  
TABLE | TAVOLO VASARI 01 / 260x120 / Top12mm Vicentina Cenere matt - Rovere Chiaro







FLOOR | PAVIMENTO *Vicentina Cenere 60x60 matt*  
COFFEE TABLE | TAVOLINO CENTRALE **GHIBERTI LOW** / 115x50 / Top12mm *Vicentina Cenere matt - Rovere Chiaro*  
SIDE TABLE | TAVOLO A LATO **PALLADIO LOW** / 80x75 / Top12mm *Vicentina Cenere matt - Rovere Chiaro*







WALL | RIVESTIMENTO Equus Pavé Bay 16,8x23,3 matt  
FLOOR | PAVIMENTO Nodi Libeccio 20x160 matt  
FIREPLACE WALL | RIVESTIMENTO CAMINETTO Grained Rust 60x120 matt  
TABLE | TAVOLO VASARI 02 / 180x90 / Beton Ivory matt - Rovere Scuro  
TABLE | TAVOLO FILARETE LOW / 115x50 / Beton Ivory matt - Rovere Scuro



WALL | RIVESTIMENTO Grained Green Copper 120x120 matt  
FLOOR | PAVIMENTO Betontech White 120x120 matt  
KITCHEN BACKSPLASH | BACKSPLASH CUCINA Equus Hoof Sculpt White Shirt 14x18,5 matt & glossy  
KITCHEN TOP | TOP CUCINA Top12mm Solid White satin  
TABLE | TAVOLO BRAMANTE LOW / 100x100 / Solid White satin - Rovere Scuro  
TABLE | TAVOLO VASARI 02 / 180x90 / Solid White satin - Rovere Scuro



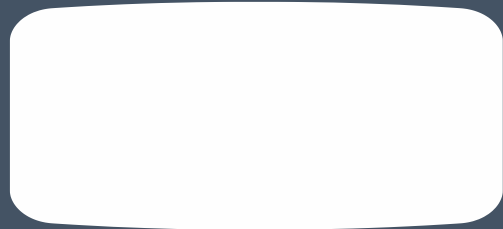


# **THE COLLECTION**

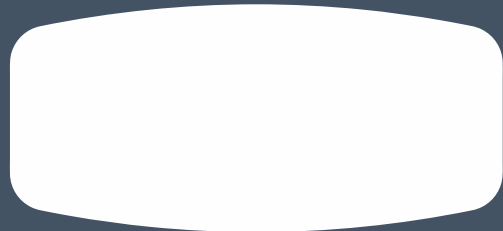
**VITRUVIO**



**ALBERTI**



**VASARI**

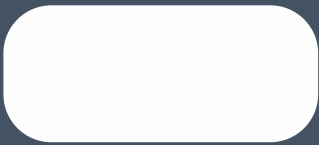


**BRAMANTE**

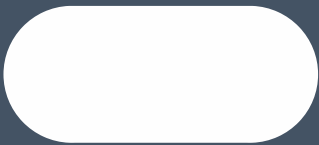




**BRAMANTE**  
**LOW**



**FILARETE**  
**LOW**



**GHIBERTI**  
**LOW**



**BRUNELLESCHI**  
**LOW**

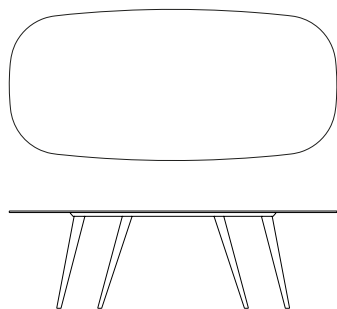


**PALLADIO**  
**LOW**

# VITRUVIO

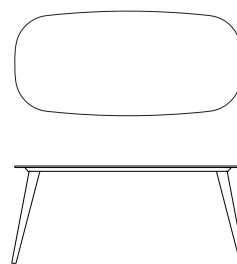
SIZE 01

W260 x D120 x H75,2 cm



SIZE 02

W180 x D90 x H75,2 cm





CERAMIC TOP | *TOP IN CERAMICA TOP12MM*

---



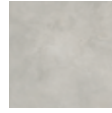
Marmo  
Apuano  
satin



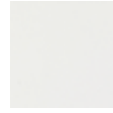
Vicentina  
Cenere  
matt



Beton  
Ivory  
matt



Beton  
Grey  
matt



Solid  
White  
satin



Marmo  
Calacatta  
satin



Betonmetal  
Copper EVO  
matt



Betonmetal  
Black Steel EVO  
matt

WOODEN STRUCTURE | *STRUTTURA IN LEGNO*

---



Noce  
Canaletto



Rovere  
Chiaro



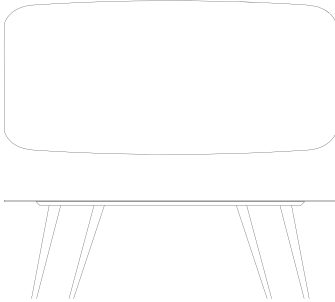
Rovere  
Scuro



# ALBERTI

SIZE 01

W260 x D120 x H75,2 cm



SIZE 02

W180 x D90 x H75,2 cm



CERAMIC TOP | *TOP IN CERAMICA TOP12MM*

---



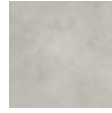
Marmo  
Apuano  
satin



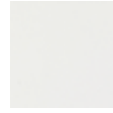
Vicentina  
Cenere  
matt



Beton  
Ivory  
matt



Beton  
Grey  
matt



Solid  
White  
satin



Marmo  
Calacatta  
satin



Betonmetal  
Copper EVO  
matt



Betonmetal  
Black Steel EVO  
matt

WOODEN STRUCTURE | *STRUTTURA IN LEGNO*

---



Noce  
Canaletto



Rovere  
Chiaro



Rovere  
Scuro



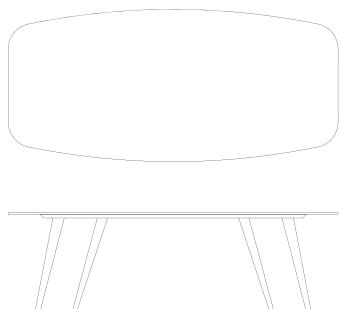
# VASARI

SIZE 01

SIZE 02

W260 x D120 x H75,2 cm

W180 x D90 x H75,2 cm



CERAMIC TOP | *TOP IN CERAMICA TOP12MM*

---



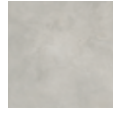
Marmo  
Apuano  
satin



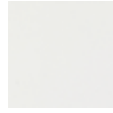
Vicentina  
Cenere  
matt



Beton  
Ivory  
matt



Beton  
Grey  
matt



Solid  
White  
satin



Marmo  
Calacatta  
satin



Betonmetal  
Copper EVO  
matt



Betonmetal  
Black Steel EVO  
matt

WOODEN STRUCTURE | *STRUTTURA IN LEGNO*

---



Noce  
Canaletto



Rovere  
Chiaro



Rovere  
Scuro



# BRAMANTE

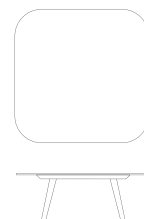
# BRAMANTE LOW

SIZE 01

SIZE 02

W120 x D120 x H75,2 cm

W100 x D100 x H35,2 cm



CERAMIC TOP | *TOP IN CERAMICA TOP12MM*

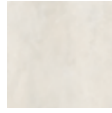
---



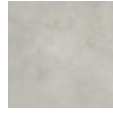
Marmo  
Apuano  
satin



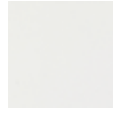
Vicentina  
Cenere  
matt



Beton  
Ivory  
matt



Beton  
Grey  
matt



Solid  
White  
satin



Marmo  
Calacatta  
satin



Betonmetal  
Copper EVO  
matt



Betonmetal  
Black Steel EVO  
matt

WOODEN STRUCTURE | *STRUTTURA IN LEGNO*

---



Noce  
Canaletto



Rovere  
Chiaro



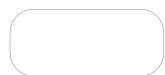
Rovere  
Scuro



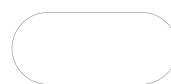
## FILARETE LOW

## GHIBERTI LOW

W115 x D50 x H35,2 cm



W115 x D50 x H35,2 cm





## CERAMIC TOP | *TOP IN CERAMICA TOP12MM*

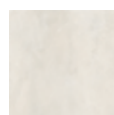
---



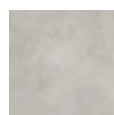
Marmo  
Apuano  
satin



Vicentina  
Cenere  
matt



Beton  
Ivory  
matt



Beton  
Grey  
matt



Solid  
White  
satin



Marmo  
Calacatta  
satin



Betonmetal  
Copper EVO  
matt



Betonmetal  
Black Steel EVO  
matt

## WOODEN STRUCTURE | *STRUTTURA IN LEGNO*

---



Noce  
Canaletto



Rovere  
Chiaro



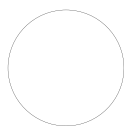
Rovere  
Scuro



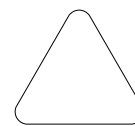
## BRUNELLESCHI LOW

## PALLADIO LOW

Ø 85 x H35,2 cm



W80 x D75 x H50 cm



CERAMIC TOP | *TOP IN CERAMICA TOP12MM*

---



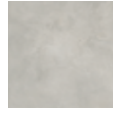
Marmo  
Apuano  
satin



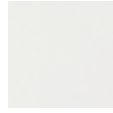
Vicentina  
Cenere  
matt



Beton  
Ivory  
matt



Beton  
Grey  
matt



Solid  
White  
satin



Marmo  
Calacatta  
satin



Betonmetal  
Copper EVO  
matt



Betonmetal  
Black Steel EVO  
matt

WOODEN STRUCTURE | *STRUTTURA IN LEGNO*

---



Noce  
Canaletto



Rovere  
Chiaro



Rovere  
Scuro



# MATERIALS OPTIONS

## OPZIONI MATERIALI

### CERAMIC TOP | TOP IN CERAMICA

---

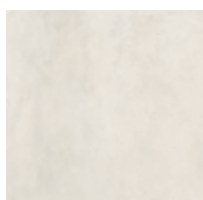
#### TOP 12MM



Marmo Apuano  
satin



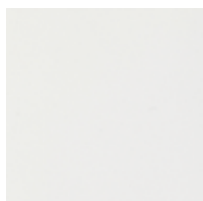
Vicentina Cenere  
matt



Beton Ivory  
matt



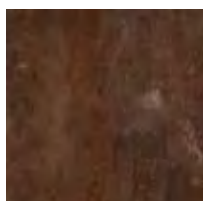
Beton Grey  
matt



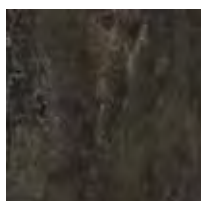
Solid White  
satin



Marmo Calacatta  
satin



Betometal  
Copper EVO  
matt



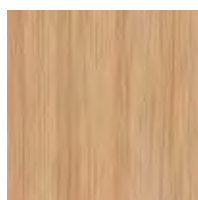
Betometal  
Black Steel EVO  
matt

### WOODEN STRUCTURE | STRUTTURA IN LEGNO

---



Noce Canaletto



Rovere Chiaro



Rovere Scuro

■  
**Noce  
Canaletto**

■  
**Rovere  
Chiaro**

■  
**Rovere  
Scuro**

**Marmo Apuano**



**Vicentina Cenere**



**Beton Ivory**



**Beton Grey**



**Solid White**



**Marmo Calacatta**



**Betometal Copper EVO**



**Betometal Black Steel EVO**



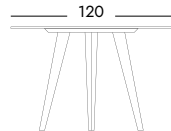
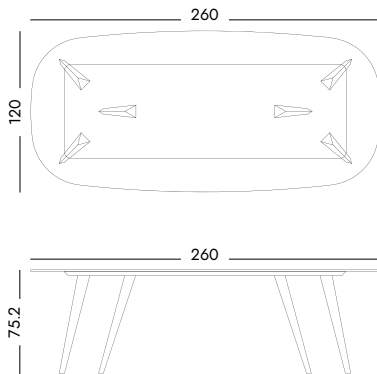


# **TECHNICAL DRAWINGS**

## VITRUVIO

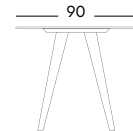
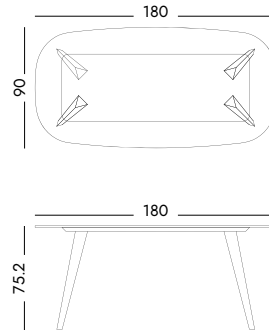
### 01 | SIZES DIMENSIONI

---



### 02 | SIZES DIMENSIONI

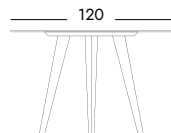
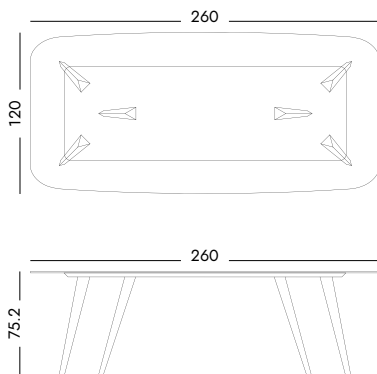
---



## ALBERTI

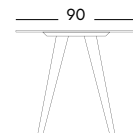
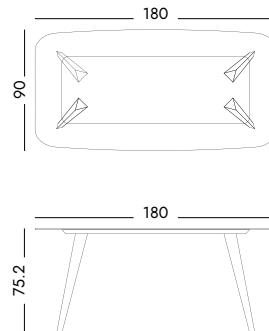
### 01 | SIZES DIMENSIONI

---



### 02 | SIZES DIMENSIONI

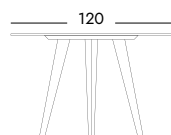
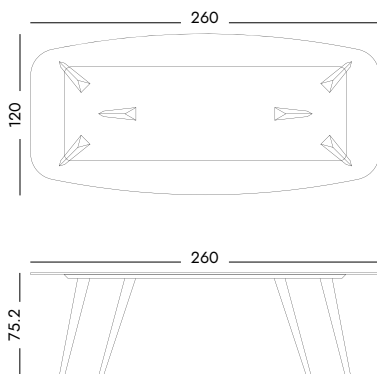
---



## VASARI

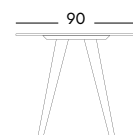
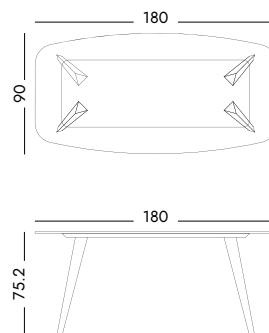
### 01 | SIZES DIMENSIONI

---



### 02 | SIZES DIMENSIONI

---

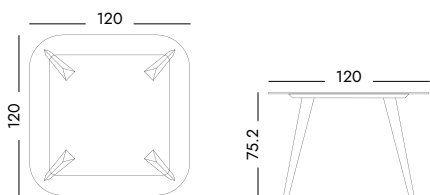




## BRAMANTE - BRAMANTE LOW

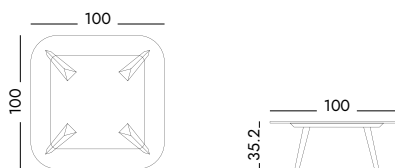
BRAMANTE | SIZES *DIMENSIONI*

---



BRAMANTE LOW | SIZES *DIMENSIONI*

---



## FILARETE LOW

SIZES *DIMENSIONI*

---



## GHIBERTI LOW

SIZES *DIMENSIONI*

---



## BRUNELLESCHI LOW

SIZES *DIMENSIONI*

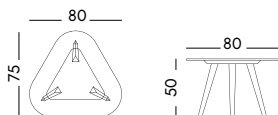
---



## PALLADIO LOW

SIZES *DIMENSIONI*

---



sizes in centimetres | *misure in centimetri*



**NEO  
CLAS  
SICO**





## **NEOCLASSICO**

Simple lines and fine materials combine the practicality of timeless design with the pursuit of aesthetically pleasant details. The Neoclassico table fits in different contexts, from the most traditional to the modern and minimal ones.

*Linee semplici e materiali pregiati combinano la praticità di un design senza tempo alla ricerca estetica di dettagli piacevoli. Il tavolo Neoclassico si adatta a contesti diversi, dal più tradizionale a quello più moderno e minimal.*

*Design by Atmosfere*



FLOOR | PAVIMENTO Lagom Beige 90x90 matt

TABLE | TAVOLO NEOCLASSICO 220x100 / Top12mm Marmo Calacatta satin - Noce Canaletto

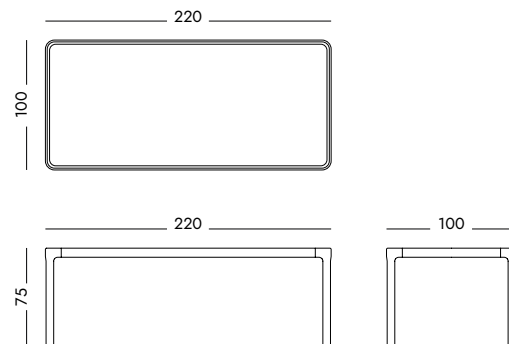
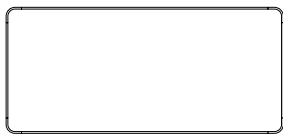
CHAIR | SEDIA BASILICA 46x80x51 Noce Canaletto



# NEOCLASSICO

## SIZES | DIMENSIONI

W220 x D100 x H75 cm





CERAMIC TOP | *TOP IN CERAMICA TOP12MM*

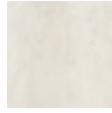
---



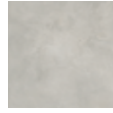
Marmo  
Apuano  
satin



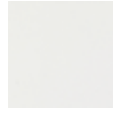
Vicentina  
Cenere  
matt



Beton  
Ivory  
matt



Beton  
Grey  
matt



Solid  
White  
satin



Marmo  
Calacatta  
satin



Betonmetal  
Copper EVO  
matt



Betonmetal  
Black Steel EVO  
matt

WOODEN STRUCTURE | *STRUTTURA IN LEGNO*

---



Noce  
Canaletto



Rovere  
Chiaro



Rovere  
Scuro





**BASI  
LICA**





## BASILICA

Basilica is a transversal piece of furniture that can fit into domestic or contract contexts in a quiet but not ordinary way. The offspring of the great tradition of Italian craftsmanship with a simple and functional design, in perfect harmony with any type of interior, it is the synthesis of rational aesthetics and refined manufacturing details that make it unique.

*Basilica è un arredo trasversale che può inserirsi in contesto domestico o contract in modo silenzioso ma non banale. Figlia della grande tradizione artigianale italiana con un design semplice e funzionale, in perfetta sintonia con qualsiasi tipo di interni è la sintesi tra un'estetica razionale ed una ricercatezza del dettaglio costruttivo che la rendono unica.*

*Design by Paolo Cappello & Simone Sabatti*

### Paolo Cappello

*Born in Verona, graduated in Industrial Design at Politecnico di Milano. After a three years collaboration with Ludovica+Roberto Palomba in Milan, in 2007 he setup his own studio in Verona where he collaborates with other professionals in architecture, communication and graphics.*

Nato a Verona, laureato in Disegno Industriale al Politecnico di Milano, dopo una collaborazione triennale con Ludovica + Roberto Palomba a Milano, nel 2008 apre il proprio studio a Verona dove collabora con altri professionisti dell'architettura, della comunicazione e della grafica.

### Simone Sabatti

*Simone Sabatti was born in Lima (Perù) in 1990, where he lived his first years in contact with workshops of artisans, founded by the volunteering association Operazione Mato Grosso, skilled in the processing of wooden and glass. In 2013 he graduated in Industrial Design and afterwards he obtained a master in 3d Visualization. In 2016 he cooperated with Gucci brand, working at the creation of special projects for the brand's visual layouts, from Paris to Tokyo.*

Nasce a Lima (Perù) nel 1990 e vive i suoi primi anni a contatto con laboratori di artigiani, abili nella lavorazione del legno e del vetro, fondati dal movimento di volontariato Operazione Mato Grosso. Nel 2013 si laurea in Disegno Industriale e successivamente ottiene un master in Visualizzazione 3D. Nel 2016 collabora con il brand Gucci, lavorando alla creazione di progetti speciali per i layout delle vetrine del marchio, da Parigi a Tokyo.



FLOOR | PAVIMENTO *Lagom Oyster 60x120 matt*  
TABLE | TAVOLO NEOCLASSICO / 220x100  
*Top12mm Betonmetal Copper EVO matt - Rovere Scuro*  
CHAIR | SEDIA BASILICA 46x80x51 *Rovere Scuro*



FLOOR | PAVIMENTO *Lagom Terrazzo Cloud 60x60 matt*  
TABLE | TAVOLO ALBERTI 02 180x90 / *Top12mm Beton Grey matt - Rovere Chiaro*  
UPHOLSTERED CHAIR | SEDIA IMBOTTITA BASILICA 46x80x51 *Rovere Chiaro* | FABRIC | TESSUTO *Chemistry Synergy Camira*







FLOOR | PAVIMENTO Lagom White 60x60 matt  
TABLE | TAVOLO VITRUVIO 180x90 / Top12mm Betonmetal Copper EVO matt - Rovere Chiaro  
CHAIR | SEDIA BASILICA 46x80x51 Rovere Chiaro  
TABLE | TAVOLO Ghiberti Low 115x1500 / Top12mm Betonmetal Black Steel EVO matt - Rovere Chiaro  
KITCHEN TOP | TOP CUCINA Top12mm Betonmetal Black Steel EVO matt



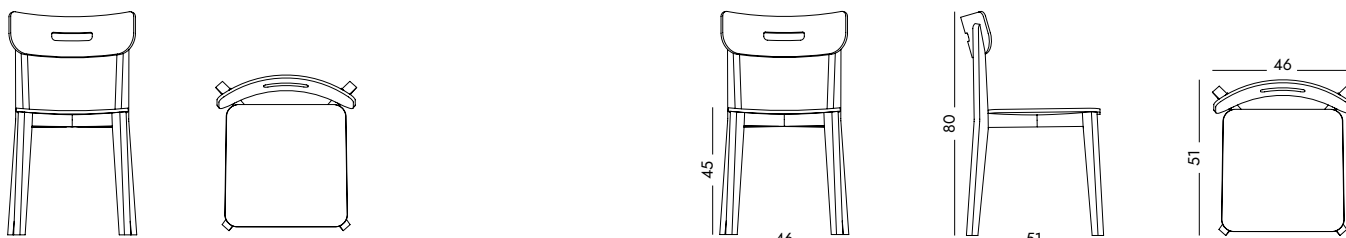
# **THE COLLECTION**

# 01 NOCE CANALETTO

SIZES | *DIMENSIONI*

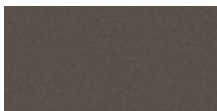
---

W46 x D51 x H80 cm



## FABRIC | TESSUTO

---



Hook  
LDS29

The wood/fabric combination is a standard one and cannot be modified.  
*L'abbinamento essenza legno/tessuto è unico e non modificabile.*

Synergy Camira Fabric | *Tessuto Synergy Camira*  
see page 176                      vedere pag. 176

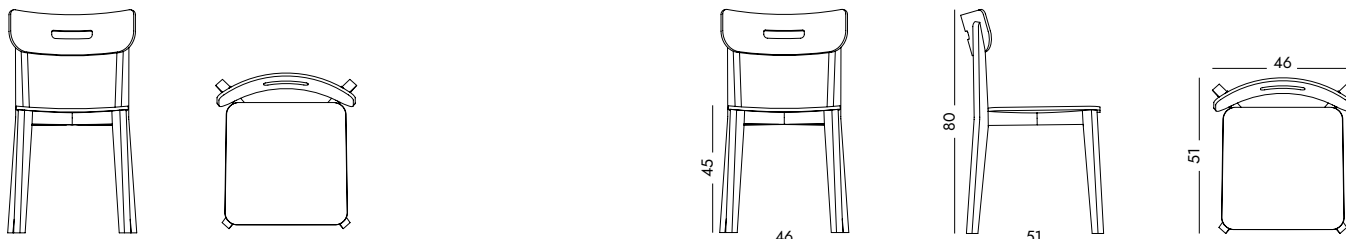


# 02 ROVERE CHIARO

SIZES | *DIMENSIONI*

---

W46 x D51 x H80 cm



## FABRIC | TESSUTO

---



Chemistry  
LDS35

The wood/fabric combination is a standard one and cannot be modified.  
*L'abbinamento essenza legno/tessuto è unico e non modificabile.*

Synergy Camira Fabric | *Tessuto Synergy Camira*  
see page 176                      vedere pag. 176

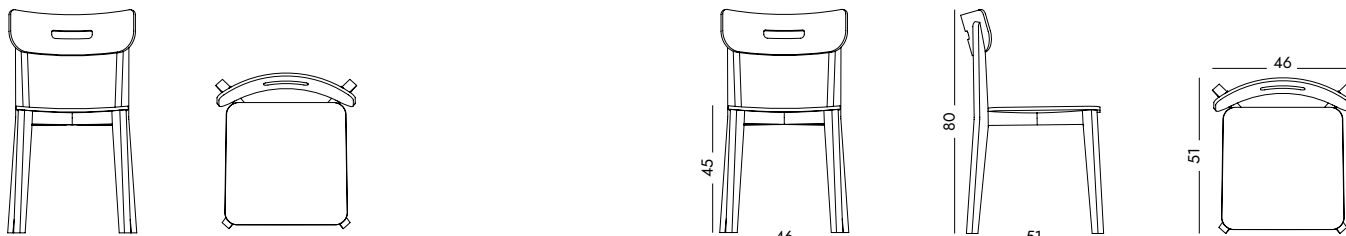


# 03 ROVERE SCURO

SIZES | *DIMENSIONI*

---

W46 x D51 x H80 cm





## FABRIC | TESSUTO

---



Serendipity  
LDS08

The wood/fabric combination is a standard one and cannot be modified.  
*L'abbinamento essenza legno/tessuto è unico e non modificabile.*

Synergy Camira Fabric | *Tessuto Synergy Camira*  
see page 176                      vedere pag. 176





IGENI  
DELL'  
ARTE





## **I GENI DELL'ARTE**

The new collection of bathroom furniture and accessories is inspired by the art of two icons, Michelangelo and Leonardo. The elegance and harmony of Renaissance, the celebration of Italian culture and the depth of the geniuses' arts guide the creation of these bathroom elements.

*La nuova collezione di mobili e accessori per l'area bagno si ispira all'arte di due icone, Michelangelo e Leonardo. L'eleganza e l'armonia del Rinascimento, la celebrazione della cultura italiana e la profondità delle arti dei due geni hanno orientato la creazione di questi elementi bagno.*

*Design by Lucchesedesign Studio*





WALL | RIVESTIMENTO *Fattamano White & Maroon 7,5x38 mix matt & glossy*  
FLOOR | PAVIMENTO *Nodi Maestrale 20x160 matt*  
SHOWER | DOCCIA *Light6mm Kos Sand 120x260 matt*  
CONSOLLE **LEONARDO** *Beton Ivory matt - Rovere Scuro*  
BASIN | LAVABO *CAVA Maroon glossy*  
SOAP DISPENSER | *DISPENSER PER SAPONE ONDA Maroon glossy*  
TOOTHBRUSH HOLDER | *PORTASPAZZOLINO GOLFO Maroon glossy*  
TOWEL RACK LADDER | *VSCALETTA PORTA SALVIETTE STRUTURA Rovere Scuro*

WALL | RIVESTIMENTO *Light6mm Biancone Beige 120x280 matt*  
FLOOR | PAVIMENTO *Biancone Beige 20x20 matt - Mar Casino di Monsignore 20x20 matt*  
CONSOLLE MICHELANGELO *Beton Ivory matt - Rovere Scuro*  
BASIN | LAVABO RIMA *Nero glossy*  
TOOTHBRUSH HOLDER | PORTASPAZZOLINO **GOLFO** *Nero glossy*  
RADIATOR | TERMOARREDO Arbi **AUREO SMALL** *Biancone Beige matt*









WALL | RIVESTIMENTO *Light6mm Biancone Beige 120x280 matt*  
FLOOR | PAVIMENTO *Mar Casino di Monsignore 20x20 matt - Biancone Beige 20x20 matt*  
CONSOLLE **MICHELANGELO** *Beton Ivory matt - Rovere Scuro*  
BASIN | LAVABO **CAVA** *Nero glossy*  
TOOTHBRUSH HOLDER | PORTASPAZZOLINO **GOLFO** *Nero glossy*



WALL | RIVESTIMENTO Light6mm Vicentina Cenere 120x280 matt  
mosaic Strips Vicentina Cenere | Marmo Apuano 29x29 mix matt & honed  
FLOOR | PAVIMENTO Vicentina Cenere 60x120 matt  
CONSOLLE LEONARDO Vicentina Cenere matt - Rovere Chiaro  
ROUND BASIN semi-built in | LAVABO TONDO semi-incasso TRACCIA White glossy  
MIRROR WITH SHELF | SPECCHIO CON MENSOLA AURORA Rovere Chiaro  
TOWEL RACK LADDER | SCALETTA PORTA SALVIETTE STRUCTURA Rovere Chiaro  
TABLE | TAVOLO PALLADIO LOW / 80x75 / Top12mm Vicentina Cenere matt - Rovere Chiaro  
SOAP DISPENSER | DISPENSER PER SAPONE ONDA Indigo glossy  
TOOTHBRUSH HOLDER | PORTASPAZZOLINO GOLFO Indigo glossy  
DUO VASE | VASO DUO Fattamano Indigo mix matt & glossy





WALL | RIVESTIMENTO Hexa Cadet Blue 31,6x31,6 matt  
FLOOR | PAVIMENTO Lagom Graphite 60x120 matt  
SHOWER | DOCCIA Lagom White 90x90 matt  
CONSOLLE MICHELANGELO Solid White satin - Rovere Chiaro  
BASIN | LAVABO CAVA Grigio Antracite glossy  
MIRROR | SPECCHIO AURORA Rovere Chiaro  
TOOTHBRUSH HOLDER | PORTASPAZZOLINO GOLFO Grigio Antracite glossy  
SOAP DISPENSER | DISPENSER PER SAPONE ONDA Grigio Antracite glossy



WALL | RIVESTIMENTO mosaic Strips Vicentina Cenere  
Marmo Apuano 29x29 mix matt & honed  
TOWEL RACK LADDER | SCALETTA PORTA SALVIETTE **STRUCTURA**  
Rovere Chiaro  
TABLE | TAVOLO BRUNELLESCHI LOW / Ø 85 /  
Top12mm Vicentina Cenere matt - Rovere Chiaro  
**DUO VASE** | VASO **DUO**  
Fattamano Indigo mix matt & glossy



WALL | RIVESTIMENTO Lagom Beige 60x120 matt - Hexa Dutch White 31,6x31,6 matt  
FLOOR | PAVIMENTO Lagom Beige 60x60 matt  
CLOSING LISTEL | LISTELLO CHIUSURA EVA 120x6 Rovere Scuro  
TOWEL HOLDER LISTEL | LISTELLO PORTA ASCIUGAMANI EVA PLUS 60x6 Rovere Scuro



WALL | RIVESTIMENTO *Fattamano Maroon* | *Harbour Grey* | *White 7,5x38 matt* | *glossy*  
FLOOR | PAVIMENTO *Marmo Apuano 60x120 honed*  
CONSOLLE MICHELANGELO *Marmo Apuano satin - Noce Canaletto*  
BASIN | LAVABO *RIMA Maroon*  
MIRROR | SPECCHIO *Arbi FORMA*  
RADIATOR | TERMOARREDO *Arbi AUREO SLIM Marmo Apuano honed*  
DUO VASE | VASO *DUO Fattamano Sage mix matt & glossy*  
TOOTHBRUSH HOLDER | PORTASPAZZOLINO *GOLFO Maroon glossy*  
SOAP DISPENSER | DISPENSER PER SAPONE *ONDA Maroon glossy*







WALL | RIVESTIMENTO *Light6mm Vicentina Cenere 120x280 matt - Marmo Apuano 120x280 honed*  
FLOOR | PAVIMENTO *Vicentina Cenere 60x60 matt*  
CONSOLLE MICHELANGELO *Vicentina Cenere matt - Rovere Chiaro*  
BASIN | LAVABO RIMA *Nero glossy*  
SOAP DISPENSER | DISPENSER PER SAPONE ONDA *Nero glossy*  
TOOTHBRUSH HOLDER | PORTASPAZZOLINO GOLFO *Bianco glossy*  
MIRROR WITH SHELF | SPECCHIO CON MENSOLA AURORA *Rovere Chiaro*

WALL | RIVESTIMENTO *Light6mm Marmo Apuano 120x280 honed*  
FLOOR | PAVIMENTO *Vicentina Cenere 60x60 matt*  
CONSOLLE **MICHELANGELO** *Vicentina Cenere matt - Rovere Chiaro*  
BASIN | LAVABO **RIMA** *Nero glossy*  
SOAP DISPENSER | *DISPENSER PER SAPONE ONDA* *Nero glossy*  
TOOTHBRUSH HOLDER | *PORTASPAZZOLINO GOLFO* *Bianco glossy*  
MIRROR WITH SHELF | *SPECCHIO CON MENSOLA AURORA* *Rovere Chiaro*





WALL | RIVESTIMENTO *Lagom Terrazzo Cloud 60x60 matt*  
FLOOR | PAVIMENTO *Lagom Smoke 90x90 matt*  
SHELF | MENSOLA *LISA Rovere Scuro*





WALL | RIVESTIMENTO *Light6mm Vicentina Cenere 120x280 matt - Tbrick Pink Panther 5,2x16 glossy*  
FLOOR | PAVIMENTO *Light6mm Vicentina Cenere 120x280 matt*  
CONSOLLE MICHELANGELO *Vicentina Cenere matt - Rovere Chiaro*  
BASIN | LAVABO RIMA *Nero glossy*  
MIRROR WITH SHELF | SPECCHIO CON MENSOLA AURORA *Rovere Chiaro*  
TOOTHBRUSH HOLDER | PORTASPAZZOLINO GOLFO *White glossy*  
SHOWER TRAY | PIATTO DOCCIA AUREO *Arbi 120x280 Light6mm Vicentina Cenere matt*



WALL | RIVESTIMENTO Tbrick Cerulean 5,2x16 glossy - Light6mm Vicentina Cenere 120x280 matt

FLOOR | PAVIMENTO Vicentina Cenere 60x60 matt

CONSOLE **LEONARDO** Vicentina Cenere matt - Rovere Chiaro

BASIN | LAVABO RIMA White glossy

MIRROR WITH SHELF | SPECCHIO CON MENSOLA **AURORA** Rovere Chiaro

SOAP DISPENSER | DISPENSER PER SAPONE **ONDA** Ochra glossy

TOOTHBRUSH HOLDER | PORTASPAZZOLINO **GOLFO** Ochra glossy

TOWEL RACK LADDER | SCALETTA PORTA SALVIETTE **STRUCTURA** Rovere Chiaro



WALL | RIVESTIMENTO Tbrick Apricot 5,2x16 glossy  
FLOOR | PAVIMENTO Marmo Apuano 60x60 honed  
CONSOLLE **LEONARDO** Marmo Apuano satin - Noce Canaletto  
BASIN | LAVABO **RIMA** Grigio Perla glossy  
MIRROR WITH SHELF | **SPECCHIO CON MENSOLA AURORA** Noce Canaletto  
TOOTHBRUSH HOLDER | **PORTASPAZZOLINO GOLFO** Grigio Perla glossy





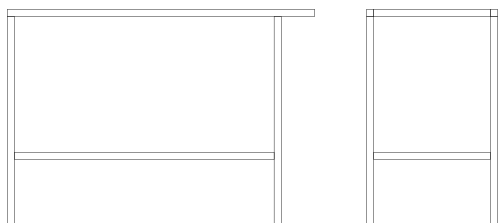


# 01 MICHELANGELO

SIZES | *DIMENSIONI*

---

W129 x D55 x H90 cm



CERAMIC TOP | *TOP IN CERAMICA TOP12MM*

---



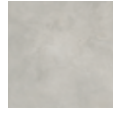
Marmo  
Apuano  
satin



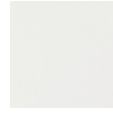
Vicentina  
Cenere  
matt



Beton  
Ivory  
matt



Beton  
Grey  
matt



Solid  
White  
satin



Marmo  
Calacatta  
satin



Betonmetal  
Copper EVO  
matt



Betonmetal  
Black Steel EVO  
matt

WOODEN STRUCTURE | *STRUTTURA IN LEGNO*

---



Noce  
Canaletto



Rovere  
Chiaro



Rovere  
Scuro

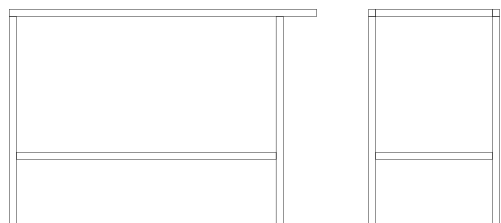


# 02 LEONARDO

SIZES | *DIMENSIONI*

---

W95 x D66 x H90 cm



CERAMIC TOP | *TOP IN CERAMICA TOP12MM*

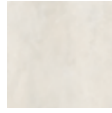
---



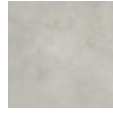
Marmo  
Apuano  
satin



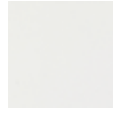
Vicentina  
Cenere  
matt



Beton  
Ivory  
matt



Beton  
Grey  
matt



Solid  
White  
satin



Marmo  
Calacatta  
satin



Betonmetal  
Copper EVO  
matt



Betonmetal  
Black Steel EVO  
matt

WOODEN STRUCTURE | *STRUTTURA IN LEGNO*

---



Noce  
Canaletto



Rovere  
Chiaro



Rovere  
Scuro

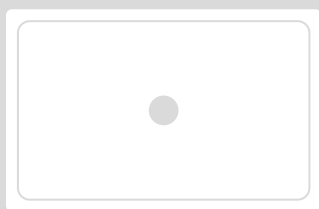








**01**  
CAVA



**02**  
RIMA

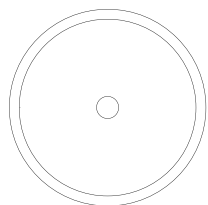


**03**  
TRACCIA

# 01 CAVA

## SIZES | DIMENSIONI

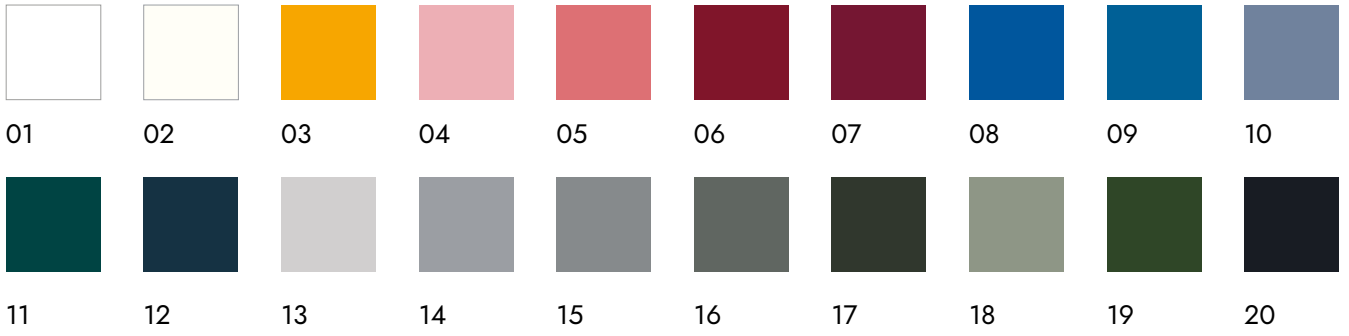
---



internal diameter | *diametro interno* 40 cm  
external diameter | *diametro esterno* 44,5 cm  
height | *altezza* 16 cm  
drain hole | *foro scarico* Ø 4 cm



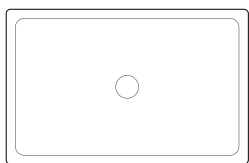
COLORS | COLORI



## 02 RIMA

### SIZES | DIMENSIONI

---

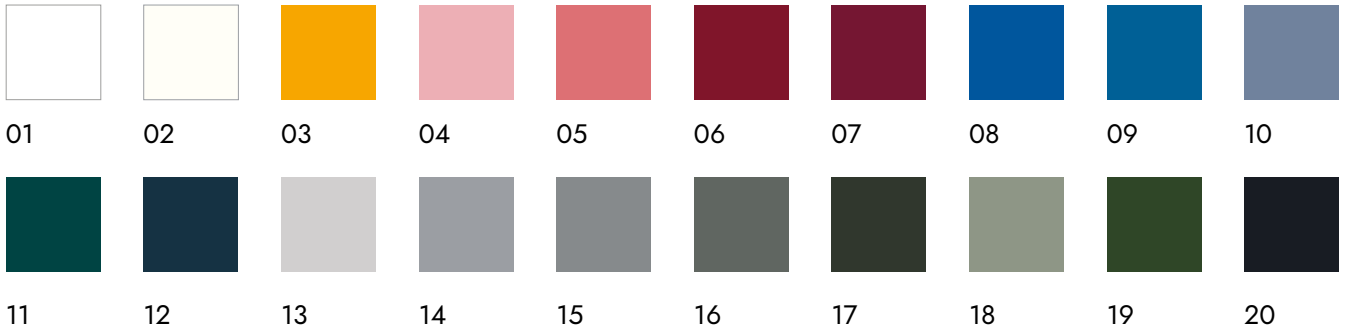


inside size | *dimensioni interno* 48,5x29,5 cm  
external size | *dimensioni esterno* 52,5x34 cm  
height | *altezza* 16 cm  
drain hole | *foro scarico* Ø 4 cm



COLORS | *COLORI*

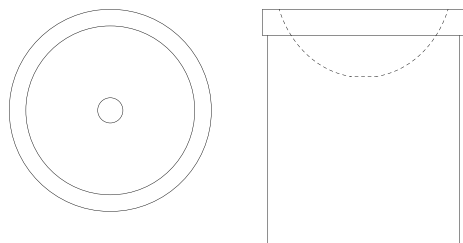
---



# 03 TRACCIA

## SIZES | DIMENSIONI

---



internal diameter | *diametro interno* 13 cm  
external diameter | *diametro esterno* 38,5 cm  
height | *altezza* 45 cm  
drain hole | *foro scarico* Ø 4,8 cm



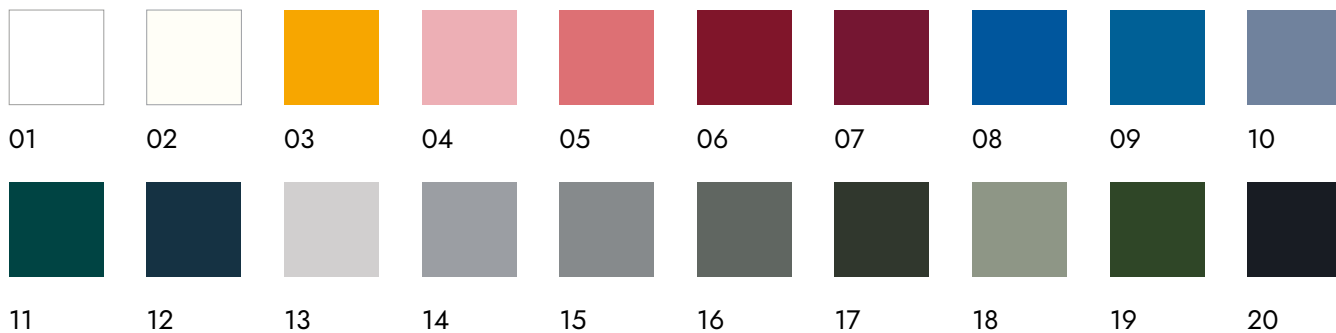
FRONT



BACK

## COLORS | COLORI

---





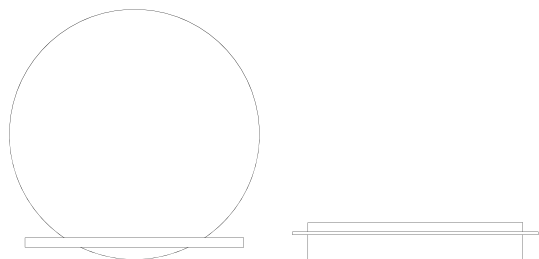




# 01 AURORA

MIRROR WITH SHELF | SPECCHIO CON MENSOLA

W80 x H80 x D12 cm



# 02 LISA

SHELF | MENSOLA

W70 x D12 x H12 cm



WOODEN STRUCTURE | *STRUTTURA IN LEGNO*

---



Noce  
Canaletto



Rovere  
Chiaro



Rovere  
Scuro

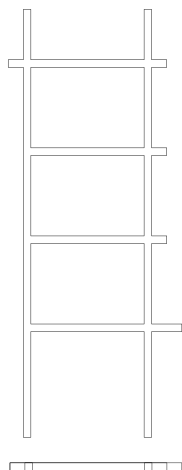


# 03 STRUCTURA

TOWEL RACK LADDER | *SCALETTA PORTASALVIETTE*

---

W69 x D30 x H170 cm



WOODEN STRUCTURE | *STRUTTURA IN LEGNO*

---



Noce  
Canaletto



Rovere  
Chiaro



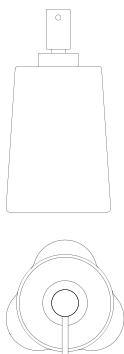
Rovere  
Scuro



# 04 ONDA

SOAP DISPENSER | *DISPENSER SAPONE*

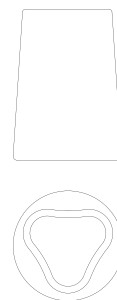
W7 x H15 cm



# 05 GOLFO

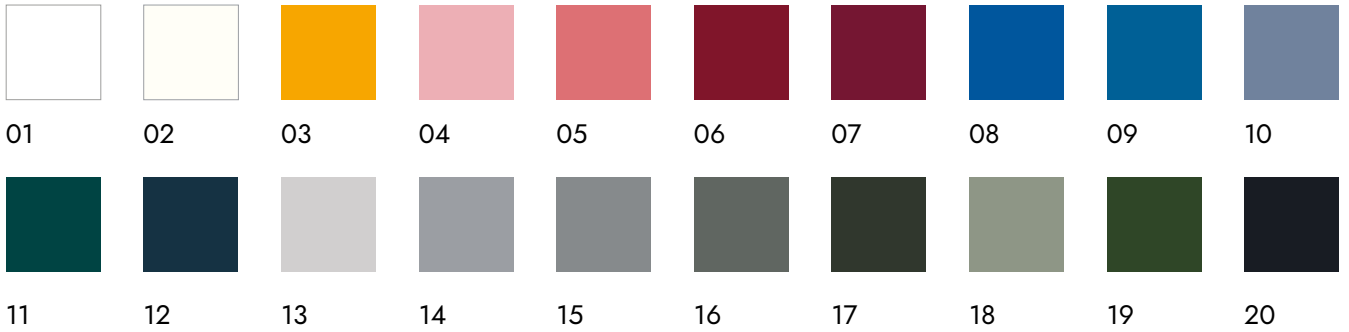
TOOTHBRUSH HOLDER | *PORTASPAZZOLINO*

Ø8 x H11 cm



COLORS | *COLORI*

---



# 06 LISTELS

EVA  
CLOSING LISTEL | *LISTELLO CHIUSURA*

W120 x D2 x H6 cm



EVA PLUS  
TOWEL HOLDER LISTEL  
*LISTELLO PORTA ASCIUGAMANI*

W60 x D2 x H6 cm





## WOODEN STRUCTURE | *STRUTTURA IN LEGNO*

---



Noce  
Canaletto



Rovere  
Chiaro



Rovere  
Scuro



# MATERIALS OPTIONS

## OPZIONI MATERIALI

### CERAMIC TOP | TOP IN CERAMICA

---

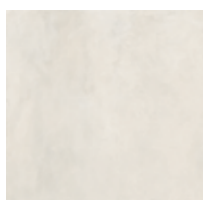
#### TOP 12MM



Marmo Apuano  
satin



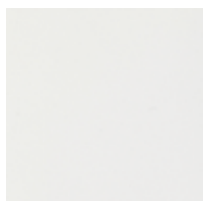
Vicentina Cenere  
matt



Beton Ivory  
matt



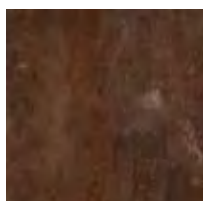
Beton Grey  
matt



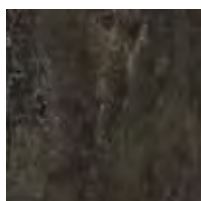
Solid White  
satin



Marmo Calacatta  
satin



Betometal  
Copper EVO  
matt



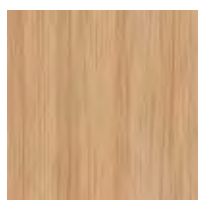
Betometal  
Black Steel EVO  
matt

### WOODEN STRUCTURE | STRUTTURA IN LEGNO

---



Noce Canaletto



Rovere Chiaro



Rovere Scuro

■  
**Noce  
Canaletto**

■  
**Rovere  
Chiaro**

■  
**Rovere  
Scuro**

**Marmo Apuano**



**Vicentina Cenere**



**Beton Ivory**



**Beton Grey**



**Solid White**



**Marmo Calacatta**



**Betonmetal Copper EVO**



**Betonmetal Black Steel EVO**







Artigiana  
01 Bianco  
RAL 9003

Fattamano  
White  
RAL 9010

Fattamano  
Ochra  
RAL 1017

Artigiana  
02 Rosa  
RAL 3015

Fattamano  
Dusty Rose  
RAL 3014



Artigiana  
03 Porpora  
RAL 3004

Fattamano  
Maroon  
RAL 3005

Artigiana  
05 Blu  
RAL 5017

Fattamano  
Indigo  
RAL 5009

Artigiana  
04 Ceruleo  
RAL 5014



Artigiana  
06 Petrolio  
RAL 6004

Fattamano  
Night  
RAL 5004

Fattamano  
Harbour Grey  
RAL 7047

Fattamano  
Smoke  
RAL 7046

Artigiana  
07 Grigio Perla  
RAL 7037



Artigiana  
08 Grigio Fumo  
RAL 7005

Artigiana  
09 Grigio Antracite  
RAL 6006

Fattamano  
Sage  
RAL 7033

Fattamano  
Pine  
RAL 6020

Artigiana  
10 Nero  
RAL 9011

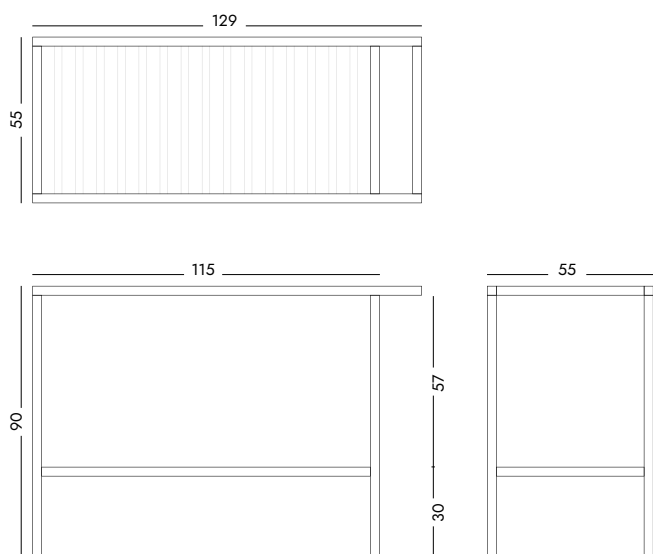




## 01 CONSOLLE MICHELANGELO

SIZES | *DIMENSIONI*

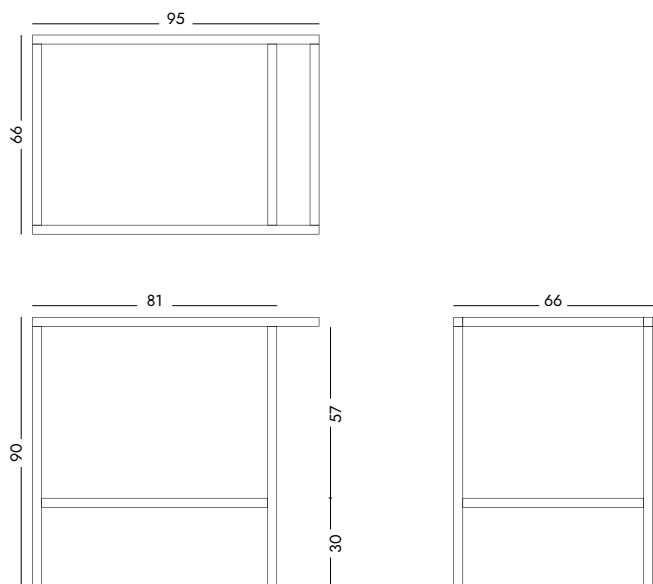
---



## 02 CONSOLLE LEONARDO

SIZES | *DIMENSIONI*

---

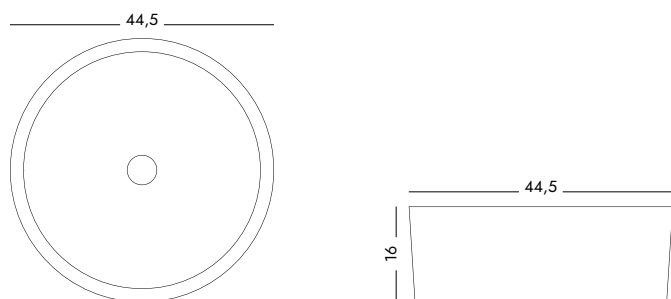




**01**  
**BASIN | LAVABO CAVA**

SIZES | *DIMENSIONI*

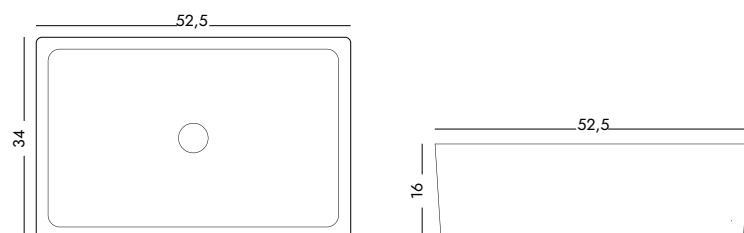
---



**02**  
**BASIN | LAVABO RIMA**

SIZES | *DIMENSIONI*

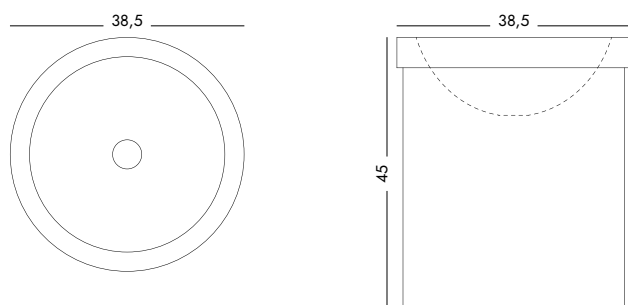
---



**03**  
**BASIN | LAVABO TRACCIA**

SIZES | *DIMENSIONI*

---

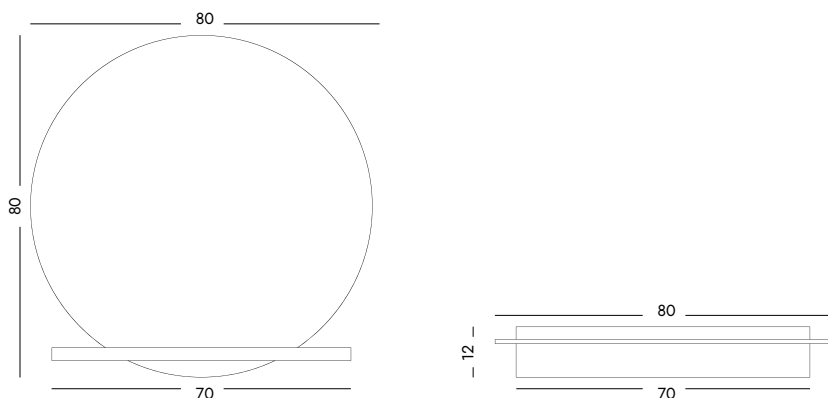


sizes in centimetres | *misure in centimetri*

**01**  
**MIRROR WITH SHELF | SPECCHIO CON MENSOLA AURORA**

SIZES | *DIMENSIONI*

---



**02**  
**SHELF | MENSOLA LISA**

SIZES | *DIMENSIONI*

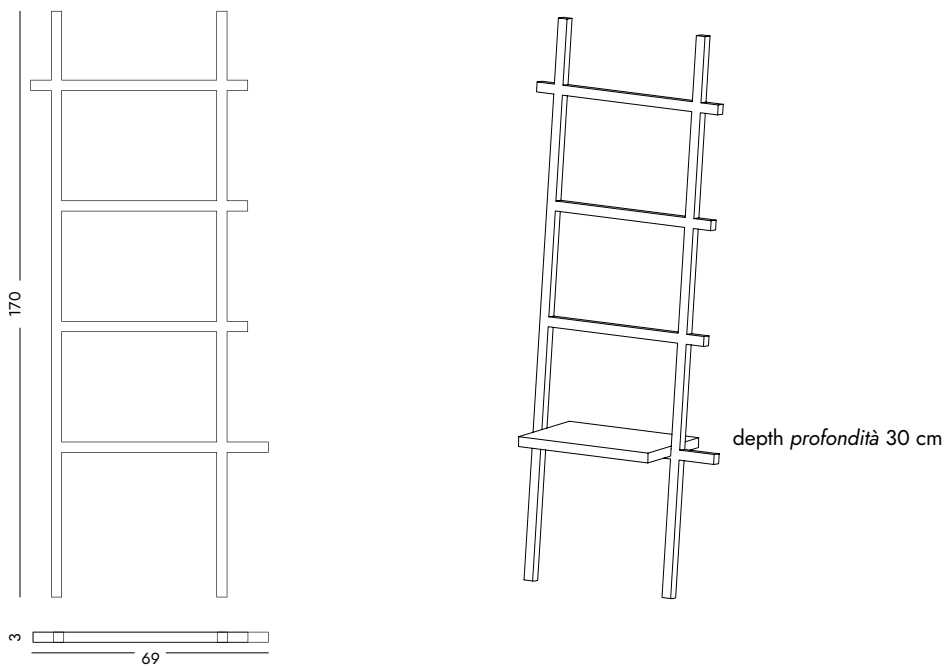
---



**03**  
**TOWEL RACK LADDER | SCALETTA PORTASALVIETTE STRUCTURA**

SIZES | *DIMENSIONI*

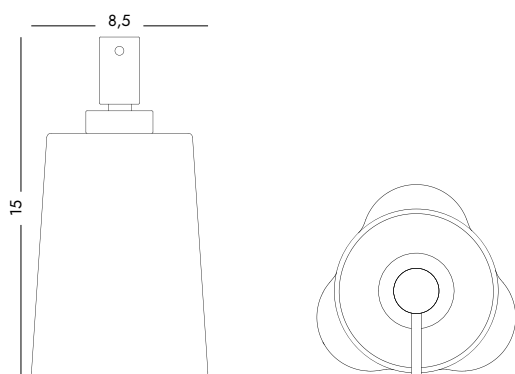
---



## 04 SOAP DISPENSER | DISPENSER PER SAPONE ONDA

SIZES | DIMENSIONI

---



## 05 TOOTHBRUSH HOLDER | PORTA SPAZZOLINO GOLFO

SIZES | DIMENSIONI

---



## 06 LISTEL EVA

SIZE 01

---



## LISTEL EVA PLUS

SIZE 02

---



sizes in centimetres | misure in centimetri



**CUS  
TOM  
MADE**





## **CUSTOM MADE**

The artist's craftsmanship lies in being able to see the work of art in the marble block, in stone, in pure matter. By developing our porcelain stoneware collections in the Top12mm thickness, we have increased the application potential of ceramics and designed a series of products that we can tailor to customize the living spaces to the top.

*La maestria dell'artista risiede nel riuscire a vedere l'opera d'arte nel blocco di marmo, nella pietra, nella materia pura. Sviluppando le nostre collezioni in gres porcellanato nello spessore Top12mm, abbiamo aumentato le potenzialità applicative della ceramica e ideato una serie di prodotti che possiamo realizzare su misura per personalizzare al massimo gli spazi abitativi.*







WALL | RIVESTIMENTO Tbrick Petroleum 5,2x16 glossy  
FLOOR | PAVIMENTO Light6mm Kos Vit 120x120 matt  
KITCHEN TOP | TOP CUCINA Top12mm Vicentina Cenere matt



WALL | RIVESTIMENTO Tbrick mix Seashell | Petroleum | Navy | Apricot 5,2x16 glossy  
FLOOR | PAVIMENTO Fattamano mix Indigo | Ochra | White 7,5x38 glossy  
KITCHEN TOP | TOP CUCINA Top12mm Vicentina Cenere matt

WALL | RIVESTIMENTO Tbrick Shark 5,2x16 glossy  
FLOOR | PAVIMENTO Romanza Gulliver 20,5x20,5 matt  
Marmo Apuano 60x120 honed  
KITCHEN TOP | TOP CUCINA Top12mm Marmo Apuano satin







WALL | RIVESTIMENTO Tbrick Sepia 5,2x16 glossy  
FLOOR | PAVIMENTO Vicentina Cenere 60x60 matt  
COUNTER | BANCO Tbrick Rain 5,2x16 glossy  
KITCHEN TOP | TOP CUCINA Top12mm Vicentina Cenere matt



WALL | RIVESTIMENTO *Micromosaics I Frammenti Black 30x30 matt*  
FLOOR | PAVIMENTO *Lagom Terrazzo Storm 60x60 matt*  
KITCHEN TOP | TOP CUCINA *Top12mm Solid White satin*

FLOOR | PAVIMENTO *Lagom White 60x60 matt*

KITCHEN TOP | TOP CUCINA *Top12mm Betonmetal Black Steel EVO matt*

TABLE | TAVOLO **Ghiberti Low** *115x50 / Top12mm Betonmetal Black Steel EVO matt - Rovere Chiaro*







WALL | RIVESTIMENTO Micromosaics | Frammenti Sand 30x30 matt  
FLOOR | PAVIMENTO Lagom Beige 60x60 matt  
KITCHEN TOP | TOP CUCINA Top12mm Marmo Calacatta satin

**TAILOR MADE SINK SOLUTIONS**  
SOLUZIONI SU MISURA PER LAVABI



**01**

**UNDERMOUNT HOLE  
FORO SOTTOTOP**

MATERIALS OPTIONS | *OPZIONI MATERIALI*

see page 171 | *vedere pagina 171*

---



**TAILOR MADE SINK SOLUTIONS**  
SOLUZIONI SU MISURA PER LAVABI



**02**

**ROUGH HOLE  
FORO GREZZO**

MATERIALS OPTIONS | *OPZIONI MATERIALI*

see page 171 | *vedere pagina 171*

---



**TAILOR MADE SINK SOLUTIONS**  
SOLUZIONI SU MISURA PER LAVABI



**03**

**FLUSHMOUNT HOLE  
FORO FILOTOP**

MATERIALS OPTIONS | *OPZIONI MATERIALI*

see page 171 | *vedere pagina 171*

---



**TAILOR MADE SINK SOLUTIONS**  
SOLUZIONI SU MISURA PER LAVABI





**04**

**BUILT IN SINK  
VASCA INTEGRATA**

MATERIALS OPTIONS | *OPZIONI MATERIALI*

see page 171 | *vedere pagina 171*

---





# MATERIALS OPTIONS

## OPZIONI MATERIALI

CERAMIC TOP

---

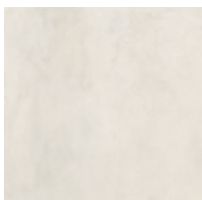
TOP12MM



Marmo Apuano  
satin



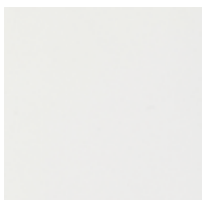
Vicentina Cenere  
matt



Beton Ivory  
matt



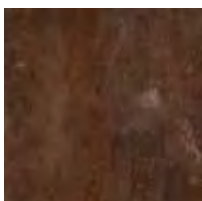
Beton Grey  
matt



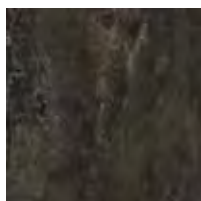
Solid White  
satin



Marmo Calacatta  
satin



Betometal  
Copper EVO  
matt



Betometal  
Black Steel EVO  
matt

## HARDNESS | DUREZZA

The hard surface of porcelain stoneware makes it a safe support with a high resistance to abrasion, scratches, wear and changes.

*La durezza del gres porcellanato ne fa un supporto sicuro e con un'elevatissima resistenza ad abrasione, graffi, usura e alterazioni.*

## CHEMICAL AND PHYSICAL STABILITY INERZIA CHIMICO - FISICA

The chemical and physical composition of porcelain stoneware guarantees its resistance to attack by chemical agents and to any alteration, both for contact with acidic materials and for thermal shocks.

*La stabilità chimico-fisica del gres porcellanato lo rende resistente agli agenti chimici e alle alterazioni, sia per contatto con materiali acidi sia per gli shock termici.*



# ADVANTAGES OF PORCELAIN STONWARE

## VANTAGGI DEL GRES PORCELLANATO

### COMPACTNESS COMPATTEZZA

Porcelain stoneware is an excellent material for contact with food. Its compact and hard surface, absolutely non-porous, remains hygienic, does not absorb nor stain.

*Il gres porcellanato è un ottimo materiale adatto al contatto con gli alimenti. La sua superficie compatta e resistente, non porosa, rimane igienica, non assorbe e non si macchia.*

### RESISTANCE | RESISTENZA

Porcelain stoneware is a high-performance material capable of withstanding heavy loads without breakage, as well as high temperatures.

*Il gres porcellanato è un materiale versatile e capace di resistere a elevati carichi senza rotture, oltre che alle alte temperature.*





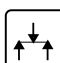
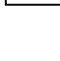



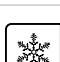

## Technical features unglazed porcelain stoneware

Conforming to European Standards EN 14411 ISO 13006 App. G (Group Bla UGL with Eb ≤ 0,5%)

CARATTERISTICHE TECNICHE GRES PORCELLANATO TUTTA MASSA Conformi a Norme Europee EN 14411 ISO 13006 App. G (Gruppo Bla UGL con Eb ≤ 0,5%)

TECHNISCHE EIGENSCHAFTEN FEINSTEINZEUG DURCHGEFÄRBT Gemäß den Europäischen Normen EN 14411 ISO 13006 App. G (Gruppe Bla UGL mit Eb ≤ 0,5%)

CARACTERISTIQUES TECHNIQUES GRES CERAME PLEIN MASSE Conformes aux Normes Européennes EN 14411 ISO 13006 App. G (Groupe Bla UGL avec Eb ≤ 0,5%)

	TECHNICAL FEATURES CARATTERISTICHE TECNICHE TECHNISCHE DATEN CARACTERISTIQUE TECHNIQUE	TESTING METHOD METODICA DI PROVA PRÜFVERFAHREN NORME D'ESSAIS	REFERENCE STANDARD RIFERIMENTO NORMA STANDARDWERT RÉFÉRENCE NORME	TEST RESULTS VALORE PRODOTTO PRODUKT WERTE VALEUR PRODUIT
	Sizes Dimensioni Abmessungen Dimensions	EN ISO 10545-2	<p>N<sub>a</sub> 15cm (%) (mm)</p> <ul style="list-style-type: none"> <li>Length and width - Lunghezza e larghezza - Länge und Breite - Longueur et largeur ±0,6% ±2,0mm</li> <li>Thickness - Spessore - Stärke - Epaisseur ±0,5 ±0,5</li> <li>Linearity - Rettilinearità spigoli - Kantengeradheit - Rectitude des arêtes 0,5 ±1,5</li> <li>Wedging - Ortogonalità - Rechtwinkligkeit - Orthogonalité ±0,5 ±2,0</li> <li>Warpage - Planarità - Ebenföchigkeit - Planéité 0,5 ±2,0</li> <li>Appearance: percentage of acceptable tiles, per lot</li> </ul> <p>Aspetto: percentuale di piastrelle accettabili nel lotto Oberflächenbeschaffenheit: Prozentsatz der Fliesen, die den geforderten Eigenschaften entsprechen Aspect: pourcentage de carreaux acceptables sur la fourniture totale</p>	Compliant Conforme Erfüllt Conforme
	Water absorption Assorbimento d'acqua Wasseraufnahme Absorption d'eau	EN ISO 10545-3	E ≤ 0,5%	Average value 0,08% Valore medio 0,08% Durchschnittswert 0,08% Valeur moyenne 0,08%
	Modulus of rupture Carico di rottura Bruchlast Charge de rupture	EN ISO 10545-4	sp. >= 7,5 mm min 1300 N	Compliant Conforme Erfüllt Conforme
	Bending strength Resistenza alla flessione Biegefestigkeit Résistance à la flexion		>35 N/mm <sup>2</sup>	Compliant Conforme Erfüllt Conforme
	Abrasion resistance Resistenza all'abrasione Abriebbeständigkeit Résistance à l'abrasion	EN ISO 10545-6	< 175 mm <sup>3</sup>	Compliant Conforme Erfüllt Conforme
	Moisture expansion Dilatazione all'umidità Feuchtigkeitsexpansion Coefficient de dilatation à l'humidité	EN ISO 10545-10	Declared value Valore dichiarato Angewebener Wert Valeur déclaré	0,01%
	Lead and cadmium discharge Determinazione della cessione di piombo e cadmio Blei- und Cadmiumentladung Perte de plomb et cadmium	EN ISO 10545-15	-	Absent Assente Abwesend Absent
	Frost resistance Resistenza al gelo Frostbeständigkeit Résistance au gel	EN ISO 10545-12	*Pass according to ISO 10545-1 Test superato in accordo con ISO 10545-1 Test überstanden nach ISO 10545-1 Pv en accord avec norme en 10545-1	Resistant Resistente Widerstandsfähig Résistant
	Resistance to low concentrations of acids and alkali Resistenza a basse concentrazioni di acidi e alcali Beständigkeit gegen schwach konzentrierten Säuren und Laugen Résistance à des basses concentrations d'acides et bases	EN ISO 10545-13	*Declared value Valore dichiarato Angewebener Wert Valeur déclaré	From ULA to ULB Da ULA a ULB Von ULA bis ULB De ULA jusqu'à ULB
	Resistance to high concentrations of acids and alkali Resistenza a alte concentrazioni di acidi e alcali Beständigkeit gegen hoch konzentrierten Säuren und Laugen Résistance à des hautes concentrations d'acides et bases		*Declared value Valore dichiarato Angewebener Wert Valeur déclaré	From UHA to UHB Da UHA a UHB Von UHA bis UHB De UHA jusqu'à UHB
	Resistance to domestic chemicals and additives for swimming pools Resistenza ai prodotti chimici di uso domestico e agli additivi per piscina Beständigkeit gegen chemischen Haushaltsreiniger und Zusatzstoffe für Schwimmbäder Résistance aux prod. chimiques d'usage domestique et additifs pour piscines		UB min.	UA

\* It's advisable to refer to Contract Division for all necessary guidelines to a correct use.  
Si raccomanda di consultare Contract Division per le indicazioni necessarie al corretto utilizzo.  
Zur korrekten Anwendung wird empfohlen mit unserem Contract Division Kontakt aufzunehmen.  
Merci de consulter notre Contract Division pour les indications a un usage correct.

# TECHNICAL FEATURES

## CARATTERISTICHE TECNICHE


### Technical features unglazed porcelain stoneware

Conforming to European Standards EN 14411 ISO 13006 App. G (Group Bla UGL with Eb ≤ 0,5%)

CARATTERISTICHE TECNICHE GRÈS PORCELLANATO TUTTA MASSA Conformi a Norme Europee EN 14411 ISO 13006 App. G (Gruppo Bla UGL con Eb ≤ 0,5%)

TECHNISCHE EIGENSCHAFTEN FEINSTEINZEUG DURCHGEFÄRBT Gemäß den Europäischen Normen EN 14411 ISO 13006 App. G (Gruppe Bla UGL mit Eb ≤ 0,5%)

CARACTERISTIQUES TECHNIQUES GRES CERAME PLEIN MASSE Conformes aux Normes Européennes EN 14411 ISO 13006 App. G (Groupe Bla UGL avec Eb ≤ 0,5%)

TECHNICAL FEATURES CARATTERISTICHE TECNICHE TECHNISCHE DATEN CARACTERISTIQUE TECHNIQUE	TESTING METHOD METODICA DI PROVA PRÜFVERFAHREN NORME D'ESSAIS	REFERENCE STANDARD RIFERIMENTO NORMA STANDARDWERT RÉFÉRENCE NORME	TEST RESULTS VALORE PRODOTTO PRODUKT WERTE VALEUR PRODUIT
 Stain resistance Resistenza alle macchie Fleckenbeständigkeit Résistance aux taches	EN ISO 10545-14	Declared value Valore dichiarato Angegebener Wert Valeur déclaré	CLASS 5
 Color resistance to light Resistenza dei colori alla luce Lichtbeständigkeit Résistance des couleurs à la lumière	DIN 51094	-	Compliant Conforme Erfüllt Conforme
 Fungi resistance Resistenza ai funghi Pilzresistenz Résistance aux mycètes	ASTM-G-21-15	Contact for 28 days with a variety of fungal strains Contatto per 28 giorni con diversi ceppi fungini 28 Tage Kontakt mit verschiedenen Pilzarten Contact pendant 28 jours avec différentes souches fongiques	No growth on the surface Nessuna crescita fungina in superficie Kein Pilzwachstum auf der Oberfläche Aucun développement fongique en surface
 SRI - Solar reflection index SRI - Indice di riflessione solare SRI - Sonnenreflexionsindex SRI - Indice de réflexion solaire	In-house test method	Illuminant D65 / Spectrophotometer at 10° Illuminante D65 / Spettrofotometro a 10° Leuchtkörper D65 / Spektralphotometer bei 10° Illuminante D65 / Spectrophotomètre à 10°	Available on request Disponibile su richiesta Auf Anfrage verfügbar Disponible sur demande
 Tendency to retain dirt Tendenza a trattenere lo sporco Neigt zur Zurückhaltung von Schmutz Tendance à retenir la saleté	UNI-9300:2015	Carbon black staining agent Macchiante Nero carbone Färbemittel kohlenwarz Tachant Noir carbone	No visible change Nessun cambiamento visibile Keine sichtbare Veränderung Aucun changement visible
 Contact with food Contatto con alimenti Kontakt mit Lebensmitteln Contact avec aliments	UNI-EN-1186:2003	Contact with solvents for 2 hours at 40° Contatto con diversi solventi per 2 ore a 40° 2 Stunden langer Kontakt mit verschiedenen Lösungsmitteln bei 40° Contact avec différents solvants pendant 2 heures à 40°	Available on request Disponibile su richiesta Auf Anfrage verfügbar Disponible sur demande
 Resistance to cold liquids Resistenza ai liquidi freddi Beständigkeit gegen kalte Flüssigkeiten Résistance aux liquides froids	UNI-EN-12720:2013	Period of contact 10s to 24h Tempi di contatto da 10s a 24h Kontaktzeit von 10s bis 24h Temp de contact de 10s à 24h	CEN TS 16209 Cl. B
 Resistance to moist Resistenza al calore umido Beständigkeit gegen feuchte Hitze Résistance à l'humidité	UNI-EN-12721:2013	55° to 100° cycles Cicli da 55° a 100° Zyklen von 55° bis 100° Cycles de 55° à 100°	No visible change CEN TS CEN TS 16209 Cl. B Nessun cambiamento visibile CEN TS CEN TS 16209 Cl. B Keine sichtbare Veränderung CEN TS CEN TS 16209 Cl. B Aucun changement visible CEN TS CEN TS 16209 Cl. B
 Resistance to dry heat Resistenza al calore secco Beständigkeit gegen trockene Hitze Résistance à la chaleur sèche	UNI-EN-12722:2013	55° to 180° cycles Cicli da 55° a 180° Zyklen von 55° bis 180° Cycles de 55° à 180°	No visible change CEN TS CEN TS 16209 Cl. B Nessun cambiamento visibile CEN TS CEN TS 16209 Cl. B Keine sichtbare Veränderung CEN TS CEN TS 16209 Cl. B Aucun changement visible CEN TS CEN TS 16209 Cl. B
 Thermal shock resistance Resistenza agli sbalzi termici Temperaturwechselbeständigkeit Résistance aux écarts de température	EN ISO 10545-9	-	Resistant Resistente Widerstandsfähig Résistant

\* It's advisable to refer to Contract Division for all necessary guidelines to a correct use.  
Si raccomanda di consultare Contract Division per le indicazioni necessarie al corretto utilizzo.  
Zur korrekten Anwendung wird empfohlen mit unserem Contract Division Kontakt aufzunehmen.  
Merci de consulter notre Contract Division pour les indications a un usage correct.

## COMPOSITION

95% Virgin Wool, 5% Polyamide.

## CLEANING

Vacuum regularly. Wipe with a damp cloth using soap and water or use proprietary upholstery shampoo. For deeper cleaning use steam or professionally dry clean. Full details can be found in Camira cleaning and disinfection's guide.

## TECHNICAL FEATURES

### ABRASION RESISTANCE

Heavy duty. 10 year guarantee.  
Independently certified to  $\geq 100,000$  Martindale cycles.

### FLAMMABILITY

- EN 1021 - 1&2 (cigarette & match)
- BS 7176 Low Hazard
- NF D 60-013
- ÖNORM B 3825 & A 3800-1 (58 kg/m<sup>3</sup> CMHR Foam)
- UNI 9175 Classe 1 IM
- EN 13501-1 Adhered Class D, s1, d0
- EN 13501-1 Un-adhered Class E, s2, d0
- BS 5852 Ignition Source 5 when FR treated
- BS 7176 Medium Hazard when FR treated
- EN 13501-1 Adhered Class B, s1, d0 when FR treated
- EN 13501-1 Un-adhered Class D, s2, d0 when FR treated
- BS 5867-2: Type B Curtains & Drapes when FR treated
- The Furniture and Furnishing (Fire Safety) Regulations 1988 (Domestic Cigarette and Match)
- IMO FTP Code (Part 8)

### RESISTANCE TO LIGHT

ISO 105 - B02 Class 5

### ABRASION RESISTANCE

ISO 105 - X12 Wet | Dry: 4

## COMPOSIZIONE

95% Lana Vergine, 5% Poliammide.

## PULIZIA

Passare regolarmente l'aspirapolvere. Pulire con un panno umido usando acqua e sapone o usare un detergente specifico per tappezzeria. Per una pulizia più profonda, utilizzare il vapore o un lavaggio a secco professionale. I dettagli possono essere trovati nella guida Camira alla pulizia e alla disinfezione.

## CARATTERISTICHE TECNICHE

### RESISTENZA ALL'ABRASIONE

Resistente. Garanzia di 10 anni.  
Certificato indipendentemente a  $\geq 100.000$  cicli Martindale.

### INFIAMMABILITÀ

- EN 1021 - 1&2 (sigarette e fiammiferi)
- BS 7176 Basso pericolo
- NF D 60-013
- ÖNORM B 3825 & A 3800-1 (Schiuma CMHR - Combustione modificata ad alta resilienza - 58 kg/m<sup>3</sup>)
- UNI 9175 Classe 1 IM
- EN 13501-1 Incollato Classe D, s1, d0
- EN 13501-1 Classe E Non incollata, s2, d0
- BS 5852 Sorgente di accensione 5 quando trattata con FR
- BS 7176 Pericolo medio quando trattato con FR
- EN 13501-1 Classe B Incollata, s1, d0 se trattato con FR
- EN 13501-1 Classe D Non incollata, s2, d0 se trattata con FR
- BS 5867-2: Tende e tendaggi di Tipo B se trattati con FR
- Il Regolamento 1988 su Mobili e Arredi (Sicurezza Antincendio) (Sigarette e fiammiferi domestici)
- Codice IMO FTP (Parte 8)

### RESISTENZA ALLA LUCE

ISO 105 - B02 Classe 5

### RESISTENZA ALL'ABRASIONE

ISO 105 - X12 Bagnato | Asciutto: 4



# SYNERGY Camira Fabrics

## **Fabrics for BASILICA upholstered chair.**

*Synergy is a rich wool fabric that represents natural simplicity.*

*An irresistibly soft, high performance material.*

*Delicately felted and soft to the touch, its understated design highlights the colourfulness of this carefully crafted fabric. The exquisite nuances are yarn-dyed.*

## **Tessuti per sedia imbottita BASILICA.**

*Synergy è un ricco tessuto in lana che rappresenta la semplicità naturale.*

*Un materiale irresistibilmente morbido e dalle prestazioni elevate.*

*Delicatamente feltrato/felpato al tatto, il suo design sobrio mette in evidenza la colorazione di questo tessuto curato. Le squisite sfumature sono tinte in filo.*

**SERENDIPITY**  
LDS08



**HOOK**  
LDS29



**CHEMISTRY**  
LDS35



**"Stay hungry, stay foolish."**

*S. Jobs 1955-2011*

---

in cooperation with:  
*in collaborazione con:*



**CHANGE** WE CAN  
CHANGE  
HABITS  
**NOT OUR  
PLANET**  
BY  
**TERRATINTA**  
group



[www.terratintagroup.com](http://www.terratintagroup.com)



a brand of **TERRATINTA GROUP SRL SB**  
Via Viazza Il Tronco 45 - 41042 Fiorano Modenese  
(MO) Italy | Tel. +39 0536911408  
[www.atmosfere.design](http://www.atmosfere.design)